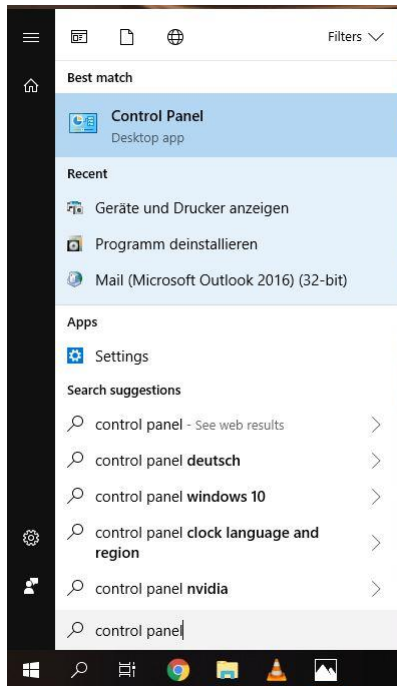
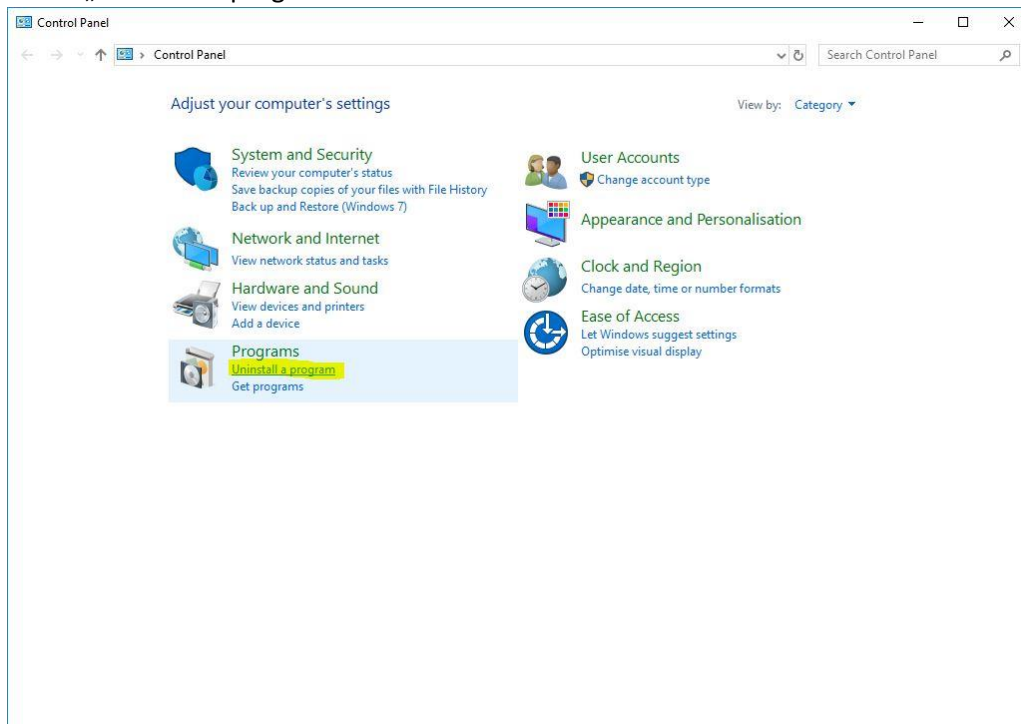


How to reset game controller to default

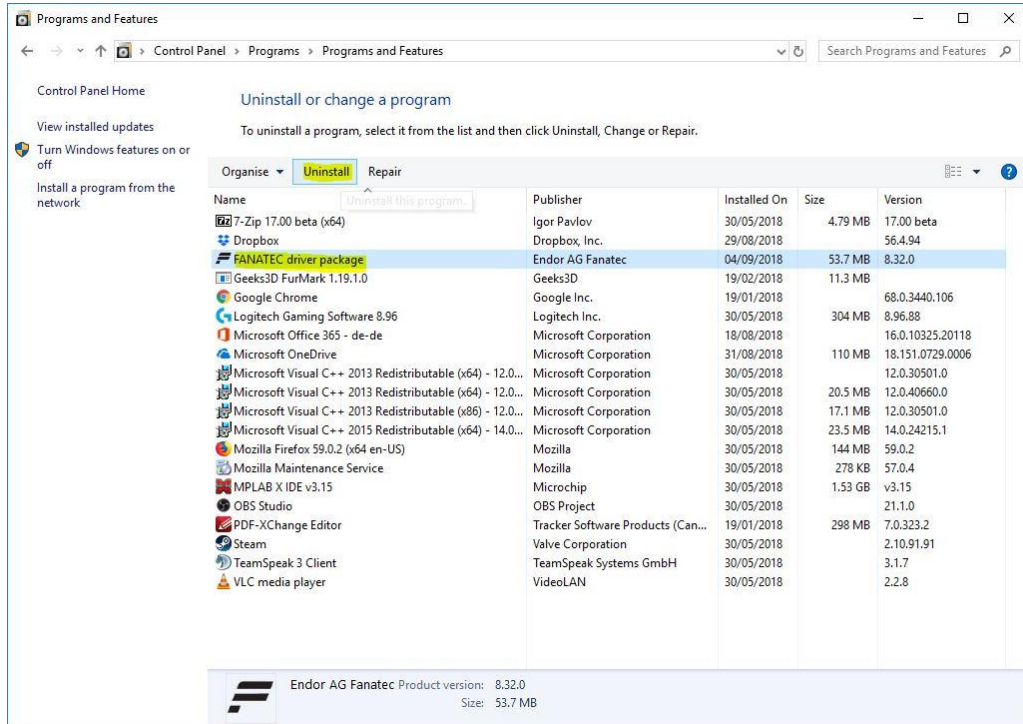
1. Connect your Fanatec device to your PC and turn it on. Open the Windows Control Panel.



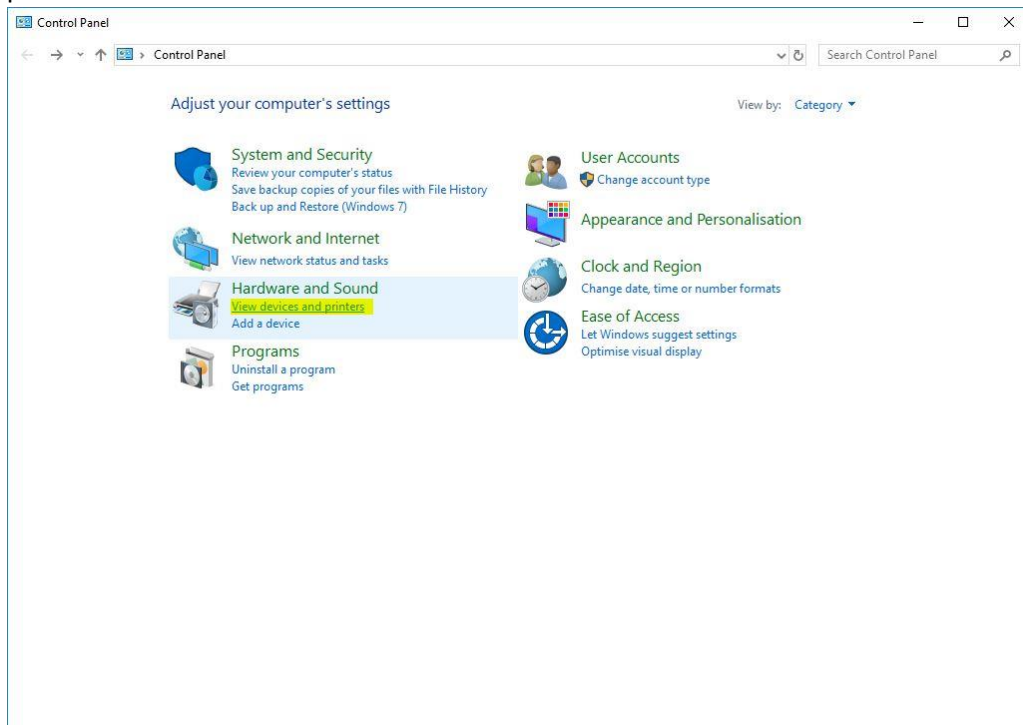
2. Select „Uninstall a program“.



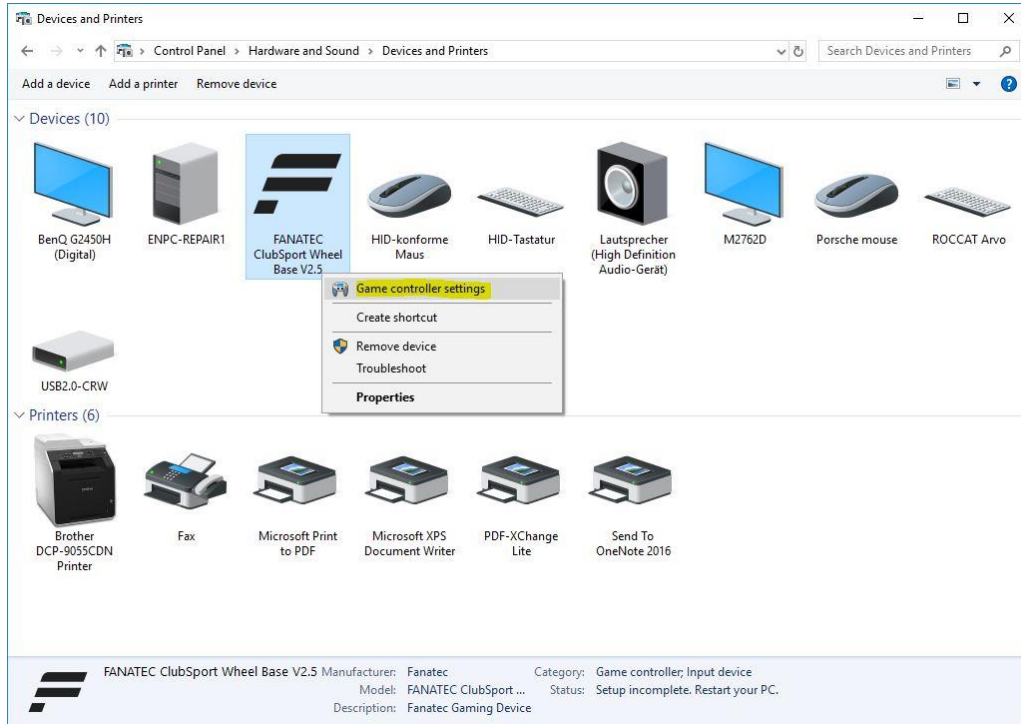
3. Select „FANATEC driver package” and click “Uninstall”.



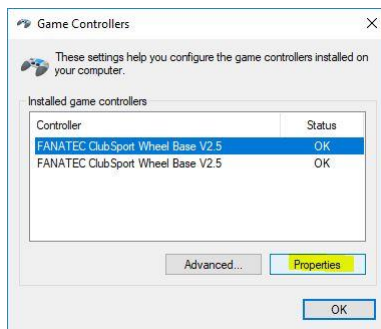
4. After uninstalling the driver return to the Control Panel and select “View devices and printers”.



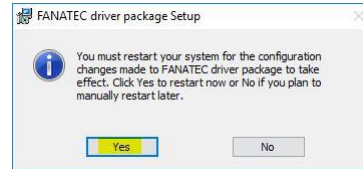
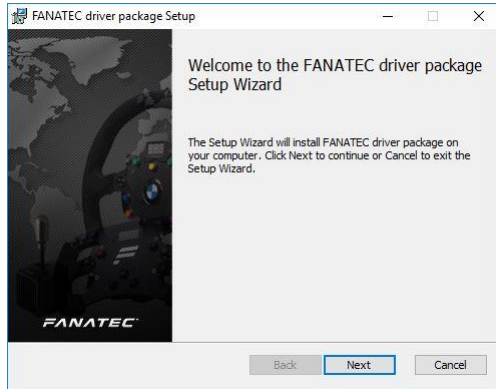
5. Right-click the Fanatec device and select “Game controller settings”.



6. Depending on your product there are two devices listed. If this is the case, please execute this step for both devices. Select the device and click on “Properties”. Then switch to the “Settings” Tab and click “Reset to default”. Then close the window by clicking “OK”.



7. Now re-install the Fanatec driver package and reboot your PC.



You can download the driver at <https://www.fanatec.com/downloads>